



# INTRODUCTION & CONTENTS

Welcome to the 2018/19 **evonicfires** brochure.

**evonicfires** is a brand of CK Fires Ltd, situated just outside of Stratford-upon-Avon, the birthplace of William Shakespeare.

Steeped in culture and history it is set in the beautiful rural Warwickshire countryside, on the banks of the river Avon.

Our fires come with the award winning super realistic LED **evoflame®** effect, now available on all of our appliances as standard and is identified throughout the brochure by the **evoflame®** logo.



At CK Fires Limited our policy is one of constant development and improvement. All products are protected by patents, registered design or intellectual property rights, which will be protected by CK Fires Limited. All specifications are correct at the time of publishing but are subject to change without notice.

## SUITES

SIGMA	4	COMPTON 2	12
OMEGA	5	EMPIRE 2	13
HELIOS	6	CASSINI	14
NIMBUS	7	CORBIERE	15
QUBE	8	MIDORI	16
GALILEO	9	KIBO	17
ALTAIR	10	BROADWAY	18
COMPTON1000	11	WESTFIELD	19

## INSET FIRES & STOVES

EV4i	20	PHANTOM	30
EV4i4	21	AMATHUS	31
STATON	22	CASAL	32
DETROIT	23	LONDA	33
MEMPHIS	24	KEPLER22	34
NEBRASKA	25	TOPAZ	35
COLORADO	26	EV8S	36
KANSAS	27	BANFF3	37
IOWA	28	E-MOD	38
BROOKLYN	29		

## INFORMATION

FIRE INFO	39
TECHNICAL SPECIFICATIONS	40-42

# CONTROL OPTIONS

All suites, both **evoflame®** and **evoflame ultraHD®** are operated by the App function or optional **e-touch®** control system.



The **e-touch®** App is available to download from the Apple App store or Android Google Play.



The **e-touch®** allows complete controllability of any floor or wall mounted suite product.

The control system is a fully portable, rechargeable, blue-tooth based touch screen unit, featuring a built-in thermostat, enabling you to regulate and maintain the selected room temperature with ease.

# SUITE OPTIONS



SILVER BIRCH LOG SET



WOODLAND LOG SET



COLOUR OPTIONS



Shown in satin stainless with polished chrome hearth riser.

## SIGMA

- 495mm **evoflame ULTRAHD®** effect
- **e-touch®** App controlled
- Optional **e-touch®** controller
- 1 or 2kW heat outputs
- Choice of silver birch or woodland ceramic log set
- Curved brushed satin steel canopy
- Illuminated side feature panels
- Polished steel hearth riser
- **SCHOTT CONTURAN® MAGIC** anti-reflective front glass

**evoflame®**  
**ULTRAHD**

For technical specifications refer to page 40.

## OMEGA

- 800mm **evoflame ULTRAHD®** effect
- **e-touch®** App controlled
- Optional **e-touch®** controller
- 1 or 2kW heat outputs
- **SCHOTT CONTURAN® MAGIC** anti-reflective front glass
- Choice of silver birch or woodland ceramic log set
- Illuminated side feature panel
- Colour options; White, whitestone, beige or beigestone

**evoflame®**  
**ULTRAHD**

For technical specifications refer to page 40.

**SUITES**



Shown in white with satin stainless feature panel.





Shown in white with satin stainless feature panel.

## HELIOS

- 495mm **evoflame ULTRAHD®** effect
- **e-touch®** App controlled
- Optional **e-touch®** controller
- 1 or 2kW heat outputs
- Glass side and front panels
- Choice of silver birch or woodland ceramic log set
- Illuminated side feature panel
- **SCHOTT CONTURAN® MAGIC** anti-reflective front glass
- Colour options; White, whitestone, beige or beigestone

**evoflame®**  
**ULTRAHD**

For technical specifications refer to page 40.

## NIMBUS

- 640mm **evoflame®** effect
- **e-touch®** App controlled
- Optional **e-touch®** controller
- 1 or 2kW heat outputs
- Glass side panels
- Feature side lighting
- Choice of silver birch or woodland ceramic log set
- Colour options; White and oak or black and grey oak



**evoflame**<sup>®</sup>  
technology

For technical specifications refer to page 40.

SUITES





Shown left handed with optional ceramic dish and log set.

## QUBE

- 640mm **evoflame®** effect
- **e-touch®** App controlled
- Optional **e-touch®** controller
- 1 or 2kW heat outputs
- Bottom mounted heater
- Glass side panel
- Ceramic log set
- Tri-colour finish
- Available right or left handed
- Optional ceramic dish

Refer to pages 39 for the full list of options.



For technical specifications refer to page 40.



## GALILEO

- 460mm **evoflame®** effect
- **e-touch®** App controlled
- Optional **e-touch®** controller
- 1 or 2kW heat outputs
- Woodland ceramic log set
- Available open or glass fronted
- Colour options; White, whitestone, beige or beigestone



For technical specifications refer to page 40.

SUITES



Shown with log box.



Shown with log box.

## ALTAIR

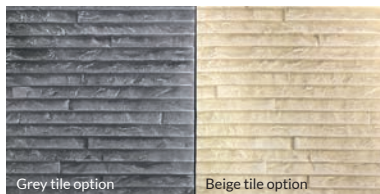
- 830mm **evoflame®** effect
- **e-touch®** App controlled
- Optional **e-touch®** controller
- 1 or 2kW heat outputs
- Woodland ceramic log set
- Available open or glass fronted
- Colour options; White, whitestone, beige or beigestone



For technical specifications refer to page 40.

## COMPTON 1000

- 1000mm **evoflame®** effect
- **e-touch®** App controlled
- Optional **e-touch®** controller
- 1 or 2kW heat outputs
- Glass side panels
- Decorative ceramic tiles
- Feature side lighting
- Choice of silver birch or woodland ceramic log set
- Colour options; White, whitestone, beige or beigestone



For technical specifications refer to page 40.

SUITES



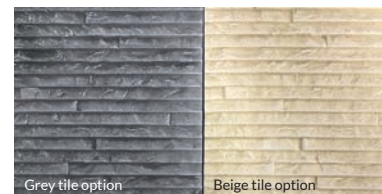
Shown in white with evoflame® 1000mm effect and grey tile option.



Shown in white with **evoflame®** effect and grey tile option.

## COMPTON 2

- 640mm **evoflame®** effect
- **e-touch®** App controlled
- Optional **e-touch®** controller
- 1 or 2kW heat outputs
- Glass side panels
- Decorative ceramic tiles
- Feature side lighting
- Choice of silver birch or woodland ceramic log set
- Colour options; White, whitestone, beige or beigestone

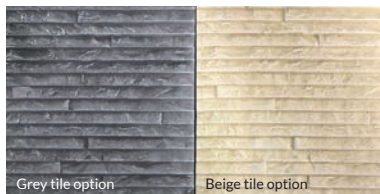


For technical specifications refer to page 40.



## EMPIRE 2

- 640mm **evoflame®** effect
- **e-touch®** App controlled
- Optional **e-touch®** controller
- 1 or 2kW heat outputs
- Glass side panels
- Decorative ceramic tiles
- Feature side lighting
- Choice of silver birch or woodland ceramic log set
- Colour options; White, whitestone, beige or beigestone



For technical specifications refer to page 40.





## CASSINI

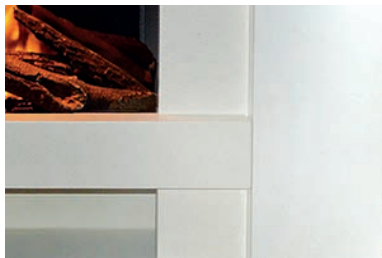
- 495mm **evoflame® ultraHD®** effect
- **e-touch®** App controlled
- Optional **e-touch®** controller
- 1 or 2kW heat outputs
- **SCHOTT CONTURAN® MAGIC** anti-reflective front and side glass
- Choice of silver birch or woodland ceramic log set
- Colour options; White, whitestone, beige or beigestone

**evoflame®**  
**ULTRAHD**

For technical specifications refer to page 40.

## CORBIERE

- 640mm **evoflame®** effect
- **e-touch®** App controlled
- Optional **e-touch®** controller
- 1 or 2kW heat outputs
- Choice of silver birch or woodland ceramic log set
- Frameless design
- Colour options; White, whitestone, beige or beigestone



For technical specifications refer to page 40.

SUITES



Shown in white with whitestone inlay and hearth.





Smooth beige finish.

## MIDORI

- 495mm **evoflame® ultraHD®** effect
- **e-touch®** App controlled
- Optional **e-touch®** controller
- 1 or 2kW heat outputs
- **SCHOTT CONTURAN® MAGIC** anti-reflective front glass
- Choice of silver birch or woodland ceramic log set
- Colour options; Smooth beige or textured black



**evoflame®**  
**ULTRAHD**

For technical specifications refer to page 40.



## KIBO

- 830mm **evoflame®** effect
- **e-touch®** App controlled
- Optional **e-touch®** controller
- 1 or 2kW heat outputs
- Woodland ceramic log set
- Available open or glass fronted
- Colour options; White, whitestone, beige or beigestone



For technical specifications refer to page 40.

## SUITES





## BROADWAY

- 1000mm **evoflame®** effect
- **e-touch®** App controlled
- Optional **e-touch®** controller
- 1 or 2kW heat outputs
- Glass side panels
- Optional TV unit and legs
- Choice of silver birch or woodland ceramic log set
- Colour options; White, whitestone, beige or beigestone

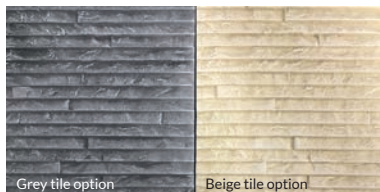


**evoflame**<sup>®</sup>  
technology

For technical specifications refer to page 40.

## WESTFIELD

- 640mm **evoflame®** effect
- **e-touch®** App controlled
- Optional **e-touch®** controller
- 1 or 2kW heat outputs
- Bottom mounted heater
- Decorative ceramic tiles
- Glass side panels
- Feature side lighting
- Colour options; White, whitestone, beige or beigestone



For technical specifications refer to page 40.

SUITES



Shown in white with grey tiles and optional log fuel bed.



## EV4i

- **evoflame®** effect
- **e-touch®** App controlled
- Optional **e-touch®** controller
- 1500W or 750W heat outputs
- Invisible heater
- Floating glass panel
- Ceramic log set
- Hot ash effect fuel bed
- Overbed illumination system
- Available in chrome or black
- Only 75mm deep with spacer supplied



For technical specifications refer to page 41.



## EV4i4

- **evoflame®** effect
- **e-touch®** App controlled
- Optional **e-touch®** controller
- 1500W or 750W heat outputs
- Invisible heater
- Floating glass panel
- Ceramic log set
- Hot ash effect fuel bed
- Overbed illumination system
- Available in chrome or black
- Only 75mm deep with spacer supplied



For technical specifications refer to page 41.

## INSET FIRES





## STATON

- **evoflame®** effect
- 1500W or 750W heat outputs
- Side switch controls
- Concealed top heater
- Full satin stainless construction
- Hot ash effect fuel bed
- Ceramic log set

Refer to pages 39 for the full list of options.



Side mounted switch controls.

**evoflame®**  
technology

For technical specifications refer to page 41.

**INSET FIRES**

## DETROIT

- **evoflame®** effect
- 1500W or 750W heat outputs
- Side switch controls
- Glass fronted
- Hot ash effect fuel bed
- Ceramic log set
- Concealed top heater
- Available in black or satin stainless

Refer to pages 39 for the full list of options.



Side mounted switch controls.



For technical specifications refer to page 41.



## INSET FIRES



Shown in nickle black.



Chrome.



Brass.

## MEMPHIS

- **evoflame®** effect
- 1500W or 750W heat outputs
- Glass fronted
- Ceramic log set
- Side switch controls
- Concealed top heater
- Cast frame and ashpan
- Available in; Nickle black, chrome or brass

Refer to pages 39 for the full list of options.



Side mounted switch controls.

**evoflame®**  
technology

For technical specifications refer to page 41.

**INSET FIRES**



## NEBRASKA

- **evoflame®** effect
- 1500W or 750W heat outputs
- Side switch controls
- Glass fronted
- Ceramic log set
- Concealed top heater
- Available in two tone black and brass

Refer to pages 39 for the full list of options.



Side mounted switch controls.

**evoflame®**  
technology

For technical specifications refer to page 41.

## INSET FIRES





Shown in two tone chrome.



Black.



Brass.

## COLORADO

- **evoflame®** effect
- 1500W or 750W heat outputs
- Glass fronted
- Ceramic log set
- Side switch controls
- Concealed top heater
- Available in two tone chrome, black or brass finishes

Refer to pages 39 for the full list of options.



Side mounted switch controls.

**evoflame®**  
technology

For technical specifications refer to page 41.

## KANSAS

- **evoflame®** effect
- 1500W or 750W heat outputs
- Side switch controls
- Ceramic log set
- Concealed top heater
- Cast frame and ashpan
- Available in; Nickle black, chrome or brass

Refer to pages 39 for the full list of options.



Side mounted switch controls.

**evoflame®**  
technology

For technical specifications refer to page 41.

## INSET FIRES



Nickle Black.



Brass.



Shown in chrome.



## IOWA

- **evoflame®** effect
- 1500W or 750W heat outputs
- Ceramic log set
- Side switch controls
- Concealed top heater
- Available in satin stainless finish

Refer to pages 39 for the full list of options.



Side mounted switch controls.

**evoflame**<sup>®</sup>  
technology

For technical specifications refer to page 41.



## BROOKLYN

- **evoflame®** effect
- 1 or 2kW heat outputs
- Optional stainless steel spacer
- Choice of fuel effect
- Overbed illumination system
- Hot ash effect fuel bed

Refer to pages 39 for the full list of options.



Satin stainless.



For technical specifications refer to page 41.

## INSET FIRES



Shown in polished chrome.



Shown in satin chrome with evoflame® effect.

## PHANTOM

- evoflame® effect
- 1 or 2kW heat outputs
- Choice of fuel effect

Refer to pages 39 for the full list of options.



Shown in satin brass.



Shown in satin black.

**evoflame**<sup>®</sup>  
technology

For technical specifications refer to page 41.

**INSET FIRES**

## AMATHUS

- evoflame® effect
- 1 or 2kW heat outputs
- Choice of fuel effect

Refer to pages 39 for the full list of options.



Shown in brass.



Shown in black.



Shown in satin stainless.



For technical specifications refer to page 41.

## INSET FIRES



Shown with polished chrome trim and fret.



Shown with brass trim and fret.

## CASAL

- **evoflame®** effect
- 1 or 2kW heat outputs
- Choice of fuel effect

Refer to pages 39 for the full list of options.



Shown in black.



Shown in polished chrome.



Shown in satin stainless.

**evoflame®**  
technology

For technical specifications refer to page 41.

**INSET FIRES**



## LONDA

- **evoflame®** effect
- 1 or 2kW heat outputs
- Insets in to a standard 16" x 22" fireplace opening
- Wall mounted or inset

Refer to pages 39 for the full list of options.



Shown with stone effect.



For technical specifications refer to page 41.

## INSET FIRES





Shown in chrome.

## KEPLER22

- **evoflame®** effect
- 1500W or 750W heat outputs
- Fits into 16" x 22" fireplace openings
- Ceramic log set
- Overbed illumination system
- Hot ash effect fuel bed
- Available in; Chrome, brass and black

Refer to pages 39 for the full list of options.



Brass.

Black.

**evoflame®**  
technology

For technical specifications refer to page 42.

**INSET FIRES**

## TOPAZ

- **evoflame®** effect
- 1500W or 750W heat outputs
- Fits into 16" x 22" fireplace openings
- Ceramic log set
- Overbed illumination system
- Hot ash effect fuel bed
- Available in; Chrome, brass and black

Refer to pages 39 for the full list of options.



For technical specifications refer to page 42.

## INSET FIRES





Shown with optional 1370mm bench.

## EV8S

- 735mm **evoflame®** effect
- **e-touch®** App controlled
- Optional **e-touch®** controller
- 1500W or 750W heat outputs
- Invisible heater
- Choice of silver birch or woodland ceramic log set
- Floating glass panel
- Overbed illumination system



For technical specifications refer to page 42.



## BANFF3

- **evoflame®** effect
- 1 or 2kW heat outputs
- Curved acrylic front and side glass
- Full steel construction
- Hot ash effect fuel bed
- Continental log set
- Available in Black only

Refer to pages 39 for the full list of options.



For technical specifications refer to page 42.

**STOVE**





Shown in light grey (RAL 9002) with optional black log boxes.

## E-MOD

- 1000mm **evoflame® ultraHD®** effect
- **e-touch®** App controlled
- Optional **e-touch®** controller
- 1 or 2kW heat outputs
- Choice of silver birch or woodland ceramic log set
- Available in light grey (RAL 9002)

### E-MOD VARIATIONS



Refer to page 42 for the different variations of this product.

**evoflame®**  
**ULTRAHD**

For technical specifications refer to page 42.

# INSET FIRE INFO



The **evoflame®** effect gives the impression of a deep and rich flame picture with a hot ash effect vermiculite fuel bed via its unique reflectivity. The flame picture which is produced using LED's can provide up to 50,000 hours of running time. It is fully adjustable through the high and low settings when using the optional remote control.



## STANDARD FEATURES



LED's



Heater



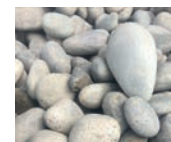
Kettle plug connector



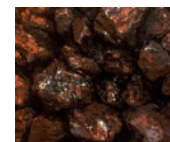
Thermostat



Overbed illumination



Beech pebbles



Coals

## OPTIONAL FEATURES



Remote control



50 or 75mm  
spacer



60mm spacer in  
satin stainless  
(Brooklyn)



Log and pebble set



Logs



App



e-touch® controller

# TECHNICAL SPECIFICATION TABLE - SUITES

PAGE NO.	PRODUCT	evoflame® EFFECT	HEAT OUTPUT	CONTROLS	WIDTH	HEIGHT	DEPTH
4	SIGMA	✓	1 or 2kW	e-touch® App	1156mm	1705mm	473mm
5	OMEGA	✓	1 or 2kW	e-touch® App	1500mm	900mm	380mm
6	HELIOS	✓	1 or 2kW	e-touch® App	1370mm	640mm	380mm
7	NIMBUS	✓	1 or 2kW	e-touch® App	1280mm	520mm	255mm
8	QUBE	✓	1 or 2kW	e-touch® App	1055mm	620mm	275mm
9	GALILEO	✓	1 or 2kW	e-touch® App	1175mm	945mm	255mm
10	ALTAIR	✓	1 or 2kW	e-touch® App	1087mm	1135mm	255mm
11	COMPTON1000	✓	1 or 2kW	e-touch® App	1500mm	520mm	365mm
12	COMPTON2	✓	1 or 2kW	e-touch® App	1120mm	520mm	365mm
13	EMPIRE2	✓	1 or 2kW	e-touch® App	1120mm	520mm	280mm
14	CASSINI	✓	1 or 2kW	e-touch® App	1297mm	1167mm	406mm
15	CORBIERE	✓	1 or 2kW	e-touch® App	1370mm	1095mm	355mm
16	MIDORI	✓	1 or 2kW	e-touch® App	530mm	620mm	320mm
17	KIBO	✓	1 or 2kW	e-touch® App	1258mm	889mm	241mm
18	BROADWAY	✓	1 or 2kW	e-touch® App	1500mm	520mm	365mm
19	WESTFIELD	✓	1 or 2kW	e-touch® App	860mm	625mm	280mm



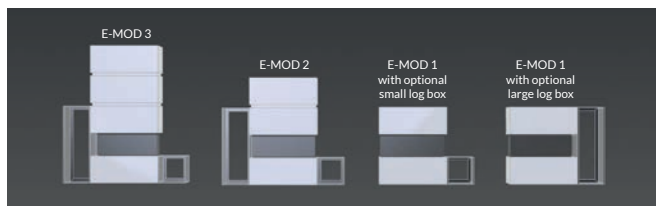
# TECHNICAL SPECIFICATION TABLE - INSET FIRES

PAGE NO.	PRODUCT	evoflame® EFFECT	HEAT OUTPUT	CONTROLS	TOTAL HEIGHT	TOTAL WIDTH	TOTAL DEPTH	INSET HEIGHT	INSET WIDTH	INSET DEPTH
20	EV4i	✓	1500W or 750W	e-touch® App	590mm	480mm	145mm	550mm	382mm	75mm
21	EV4i4	✓	1500W or 750W	e-touch® App	620mm	480mm	145mm	550mm	382mm	75mm
22	STATON	✓	1500W or 750W	Switch, Remote or App	615mm	505mm	200mm	550mm	382mm	75mm
23	DETROIT	✓	1500W or 750W	Switch, Remote or App	590mm	460mm	180mm	550mm	382mm	75mm
24	MEMPHIS	✓	1500W or 750W	Switch, Remote or App	615mm	515mm	200mm	550mm	382mm	75mm
25	NEBRASKA	✓	1500W or 750W	Switch, Remote or App	605mm	495mm	200mm	550mm	382mm	75mm
26	COLORADO	✓	1500W or 750W	Switch, Remote or App	605mm	460mm	130mm	550mm	382mm	75mm
27	KANSAS	✓	1500W or 750W	Switch, Remote or App	615mm	515mm	200mm	550mm	382mm	75mm
28	IOWA	✓	1500W or 750W	Switch, Remote or App	605mm	490mm	130mm	550mm	382mm	60mm
29	BROOKLYN	✓	1 or 2kW	Switch, Remote or App	605mm	490mm	130mm	550mm	382mm	60mm
30	PHANTOM	✓	1 or 2kW	Switch, Remote or App	602mm	506mm	105mm	550mm	382mm	75mm
31	AMATHUS	✓	1 or 2kW	Switch, Remote or App	602mm	506mm	105mm	550mm	382mm	75mm
32	CASAL	✓	1 or 2kW	Switch, Remote or App	612kW	495mm	90mm	550mm	382mm	75mm
33	LONDA	✓	1 or 2kW	Switch, Remote or App	590mm	590mm	145mm	550mm	382mm	85mm

CONTINUED ON PAGE 42

# TECHNICAL SPECIFICATION TABLE - INSET FIRES & STOVE

PAGE NO.	PRODUCT	evoflame® EFFECT	HEAT OUTPUT	CONTROLS	TOTAL HEIGHT	TOTAL WIDTH	TOTAL DEPTH	INSET HEIGHT	INSET WIDTH	INSET DEPTH
34	KEPLER22	✓	1500W or 750W	Switch, Remote or App	605mm	645mm	135mm	550mm	382mm	75mm
35	TOPAZ	✓	1500W or 750W	Switch, Remote or App	605mm	645mm	135mm	550mm	382mm	75mm
36	EV8S	✓	1500W or 750W	e-touch® App	520mm	855mm	315mm	N/A	N/A	N/A
36	EV8S 1370 Bench	N/A	N/A	N/A	350mm	1370mm	400mm	N/A	N/A	N/A
37	BANFF3	✓	1 or 2kW	Switch, Remote or App	671mm	460mm	355mm	N/A	N/A	N/A
38	E-MOD 3	✓	1 or 2kW	e-touch® App	2135mm	1050mm	353mm	N/A	N/A	N/A
38	E-MOD 2	✓	1 or 2kW	e-touch® App	1663mm	1050mm	353mm	N/A	N/A	N/A
38	E-MOD 1	✓	1 or 2kW	e-touch® App	1200mm	1050mm	353mm	N/A	N/A	N/A
38	Optional large log box	N/A	N/A	N/A	1200mm	420mm	330mm	N/A	N/A	N/A
38	Optional small log box	N/A	N/A	N/A	420mm	420mm	330mm	N/A	N/A	N/A



## E-MOD VARIATIONS

The E-Mod suite gives you design flexibility by adding modular top blocks.

The optional large or small log boxes can also be added.

The large log box can be used horizontally or vertically for total creativity with your fireplace design.

ELECTRIC FIRES AVAILABLE EXCLUSIVELY THROUGH INDEPENDENT FIREPLACE SHOWROOMS





Evonic House, Clifford Business Park, Clifford Lane, Stratford-upon-Avon CV37 8HW

TEL: +44 (0) 1789 263868 | FAX: +44 (0) 1789 293080

EMAIL: [sales@evonicfires.co.uk](mailto:sales@evonicfires.co.uk) | WEBSITE: [www.evonicfires.co.uk](http://www.evonicfires.co.uk) | [🐦@evonicfires](https://twitter.com/evonicfires)