



CAPITAL

— ACCESSORIES —

LEADING SUPPLIER OF LUXURY FIREPLACES





CAPITAL

— ACCESSORIES —

A	
ADHESIVE	33
ALL NIGHT BURNER	38
ASHPANS	38
ATMOSFIRE STOVE WIPER	35
B	
BACKS - CAST IRON	37
BALLOONS	31
BARs	39
BASKETS	42
BEAMS	4-17
BRICK CHAMBERS	20
BRICK SETS	37
BUCKETS	45
C	
CAST IRON BACKS	37
CERAMICS	52
CHAMBERS	18-21
CHIMNEY BALLOON	31
CHIMNEY COWLS	32
CHIMNEY POTS	32
CLAY BACKS & LINTELS	40
CLOSURE PLATE	37
COALS	52
CO MONOXIDE DETECTOR	34
COMPANION SETS	47
D	
DAMPERS	37
DATA PLATES	31
DRIFTWOOD - GAS	52
E	
ELECTRIC PD FIRES	52
ELECTRIC STOVES	50
EMBAGLOW	52
F	
FANS	34
FARMHOUSE HEARTHs	22
FERMACELL	21
FIRE BLOCK SEAL	33

FIREBOARD CHAMBERS	21
FIRE CEMENT SEALER	33
FIREGUARDS	48
FIXING KITS	31
FIXING REGISTER PLATE KITS	31
FLUE	28
FLUE FREE	35
FLUE COLLAR	31
FLUE LINER	29
FLUE SEAL	33
FRETS	53
G	
GAS HOT BOX	52
GAS TRIMS	53
GEOCAST BEAMS	4-17
GLASS CLEANER	35
GLASS HEARTHs	24
GLASS WIPER	35
GLOVES	46
GRATES	36
GRATE AND STOVE POLISH	35
GRANITE HEARTHs, FLATS, SLIPS AND BACK PANELS	26
H	
HEARTHs - GLASS	24
HIGH TEMPERATURE PAINT	35
HOT BOX	52
L	
LINTELS	40
LOG BASKETS	42
LOG BUCKETS	45
LOG MOISTURE METER	34
LOGS - GAS	52
LOG STORES	43
M	
MATCHES	34
MICAFIL	31
MOISTURE METER	34

P	
PAINT	35
PEBBLES - GAS	52
PELLETS	34
PD2 ELECTRIC FIRE	52
R	
REGISTER PLATE KITS	31
REPLACEMENTS	36
ROPE ADHESIVE	33
ROPE KITS & ROLLS	33
RYTON VENTS	34
S	
SCREENS	48
SEALANTS	33
SILICON FIREPROOF SEALANT	33
SKAMOLEX	21
SLATE CHAMBERS	19
SMOKE PELLETS	34
SOLID FUEL KITS	41
SOOT BOX	41
STONE SEALER	35
STORES - LOGS	43
STOVE AND GRATE POLISH	35
STOVE CHAMBERS	18-21
STOVE ENAMEL PIPE	30
STOVE FANS	34
STOVE FIXING KIT	31
STOVE GLOVES	46
STOVE THERMOMETER	34
T	
THERMOMETER	34
TOP HAT ADAPTOR	33
TRIMS - GAS	53
TRIMS - SOLID FUEL	41
V	
VENTS	34
VERMICULITE	31
VITREOUS ENAMEL PIPE	30

STOVE BEAMS





Geocast Classic Beam

Available in sizes 36", 42", 48" & 54"

Our non-combustible oak effect classic beams available in Light, Dark and Antique Oak, have been developed from a natural and extremely durable material and are molded to achieve ultimate high definition creating a truly authentic look. Being non-combustible, our Geocast beams allow smaller clearance distances than natural wood.*

Ambient lighting can also be supplied (as seen on page 6) on our 48" and 54" classic beams as an optional extra, that not only creates a warmer impression in your home, but also gives more

focus to the fire. The lighting kit can be operated separately to the stove, meaning you're able to maintain a cosy ambience with or without the stove being lit.

Our new decorative beam brackets are a great addition to enhance the visual effect of the Geocast Classic beams. Please see pages 7 and 16 for images.

Please note all of our beams are hand finished therefore may vary slightly. *See our website for clearances.



48" Antique Oak with Ambient Lights



NEW BEAM BRACKETS



54" Dark Oak (shown with large Decorative Beam Brackets)





Dark Oak

Geocast 48" Contemporary Oak Beam Light & Dark Oak

Our non-combustible oak effect beams have been developed from a natural and extremely durable material and are molded to achieve ultimate high definition creating a truly authentic look.

Being non-combustible, our Geocast beams allow smaller clearance distances than natural wood.*

The Geocast Contemporary Beam is available in 48" in a choice of Dark or Light Oak finishes as pictured to the left with the Avebury Eco stove, Rustic brick chamber and **our new beautifully rustic 48" x 15" Farmhouse stone hearth.**

*Please see our website for clearances.





Dark Oak

Geocast Rustic Beam Natural & Dark Oak

Available in 48" & 54"

Our non-combustible oak effect beams have been developed from a natural and extremely durable material and are molded to achieve ultimate high definition creating a truly authentic look.

Being non-combustible, our Geocast beams allow smaller clearance distances than natural wood.*

Beautifully rustic yet sophisticated with a natural and dark oak finish, the Geocast Rustic Beam embraces a rural, country charm look and feel, perfect for the traditional home. Available in sizes 48" and 54".

*Please see our website for clearances.





Geocast 48" Contemporary Stone Mineral Grey

Our non-combustible oak effect beams have been developed from a natural and extremely durable material and are molded to achieve ultimate high definition creating a truly authentic look.

Being non-combustible, our Geocast beams allow smaller clearance distances than natural wood.*

Beautifully modern with a satin smooth, mineral grey finish, the Geocast Contemporary Stone Beam is paired perfectly here with a Rusty Slate chamber, Scene Eco stove and honed granite front and back hearth.

*Please see our website for clearances.





Geocast 48" Contemporary Steel Stove Grey

Our non-combustible oak effect beams have been developed from a natural and extremely durable material and are molded to achieve ultimate high definition creating a truly authentic look.

Being non-combustible, our Geocast beams allow smaller clearance distances than natural wood.*

Beautifully modern and minimalistic with a stove grey paint finish, the Geocast Contemporary Steel Beam is paired perfectly here with the reeded black chamber, Bassington Eco Baseline stove and honed granite hearth, slabbed for solid fuel.

*Please see our website for clearances.

GEOCAST BEAM OVERVIEW

Geocast Classic Beam Available in sizes 36" (915mm), 42" (1070mm), 48" (1220mm) & 54" (1370mm)

140 mm (H) x 105 mm (D)



LIGHT OAK



DARK OAK



ANTIQUE OAK



AMBIENT LIGHTING
SUITABLE WITH THE 48" & 54" CLASSIC BEAMS



DECORATIVE BEAM BRACKETS (LARGE)
SUITABLE WITH THE CLASSIC BEAMS



DECORATIVE BEAM BRACKETS (SMALL)
SUITABLE WITH THE CLASSIC BEAMS

Geocast Contemporary Oak Beam Available in 48" (1220mm)

140 mm (H) x 95 mm (D)



Geocast Rustic Beam Available in 48" (1220mm) & 54" (1370mm)

130 mm (H) x 100 mm (D)



Geocast Contemporary Stone Available in 48"

1220 mm (W) x 140 mm (H) x 105 mm (D)



Geocast Contemporary Steel Available in 48"

1220 mm (W) x 150 mm (H) x 60 mm (D)





SLATE & STONE CHAMBERS



RIVEN SLATE



RUSTY SLATE



CORINTHIAN STONE
(MADE TO MEASURE NOT AVAILABLE)

Made to Measure Chambers Available on Request

Slate Chamber Dimensions (mm): 1x (1015 w x 1000 h x 20-30 thick) 2x (450 w x 1000 h x 20-30 thick)

Minimum clearance distances apply, visit our website for instructions. Please note colours may vary.

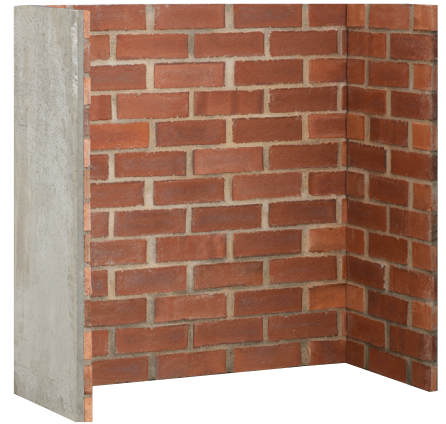
BRICK CHAMBERS



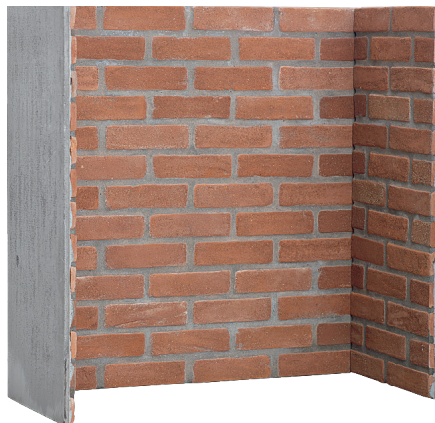
POMPEII



RUSTIC HERRINGBONE



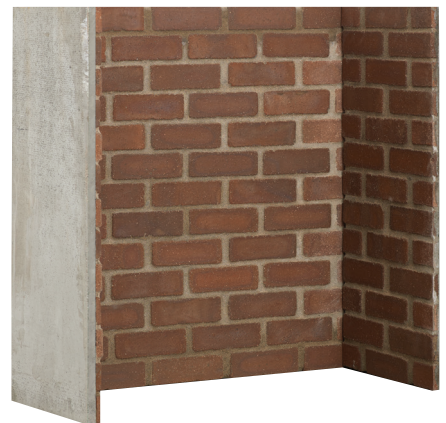
COBBLED RED



RED



RAINBOW



RUSTIC



RETURNS



RETURNS & ARCH

Brick Chamber Dimensions (mm):

1x (1015 w x 1000 h x 30 thick)

2x (450 w x 1000 h x 30 thick)

Arched Chamber (mm):

1x (1015 x 1000) 2x (450 x 850)

Arch 1115 x 215

Brick Side Returns: 95-100mm,

Arch Height Opening: Max 810mm

Minimum clearance distances apply,

visit our website for instructions.

Please note colours may vary.

SKAMOLEX & FERMACELL



REEDED & PLAIN SKAMOLEX FIREBOARD CHAMBER

OUR SKAMOLEX FIREBOARD CHAMBERS
CAN BE SPRAY PAINTED BLACK USING
OUR HIGH TEMPERATURE PAINT
TO ACHIEVE THE DESIRED LOOK
PICTURED ABOVE WITH THE REEDED
PORTRAIT FIREBOARD, SILSOE AEGEAN
LIMESTONE SURROUND AND VEGA
EDGE 200SL ECO STOVE.

FERMACELL BOARD

1200MM (W) X 1000MM (H) X 12.5 (D)

WATER RESISTANT CEMENT PARTICLE
BUILDING BOARD. HEAT RESISTANT TO
PROLONGED SURFACE TEMPERATURES OF
UP TO 200°C. IDEAL FOR STOVE CHAMBERS
ALTHOUGH SHOULD NOT BE USED IN AN
ENVIRONMENT WHERE DIRECT CONTACT
WITH A NAKED FLAME IS POSSIBLE OR HEAT
LIMITS EXCEEDED.

PRODUCT	THICKNESS	SIZE	DENSITY
PLAIN PANELS	20MM	1000 X 610MM	600KG/CU.M
PLAIN PANELS	25MM	1000 X 610MM	600KG/CU.M
REEDED LANDSCAPE PANELS	20MM	1000 X 610MM	700KG/CU.M
REEDED PORTRAIT PANELS	20MM	1000 X 610MM	700KG/CU.M
CAST IRON REEDED PANELS	7MM	4 X (915X380)	N/A

NEW
RUSTIC
FARMHOUSE
HEARTH



FARMHOUSE STONE HEARTH

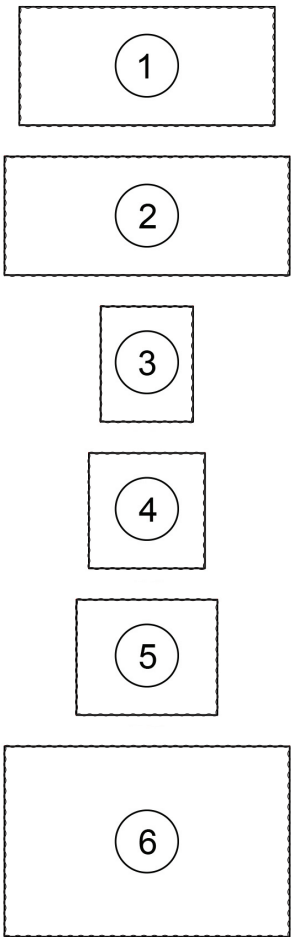
New for this season we welcome our Farmhouse Limestone Hearths.

Inspired by country style decor and living, this natural stone is warm and cozy in appearance but strong and robust in character.

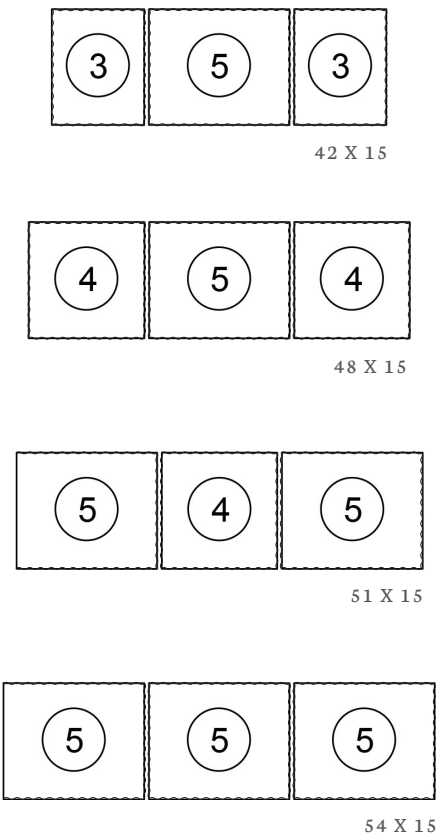
Honed with tumbled chiselled edges, it is blue grey in colour and looks rustic and antique in appearance.

With a variety of different size options for front and back hearths to suit most fireplace requirements, it's a fantastic alternative to traditional granite or slate.

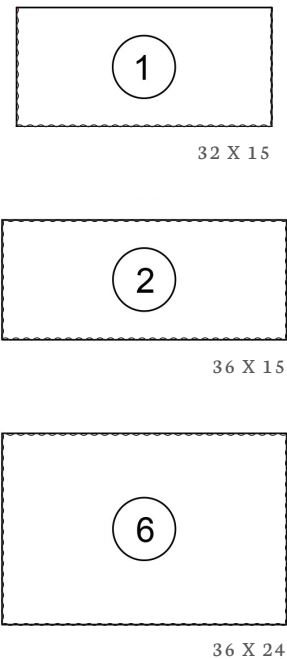
INDIVIDUAL PIECES



HEARTH



SINGLE PIECE HEARTH (FRONT OR BACK)



All Farmhouse products are sold as individual components. Your retailer will be able to advise what best suits your requirements.

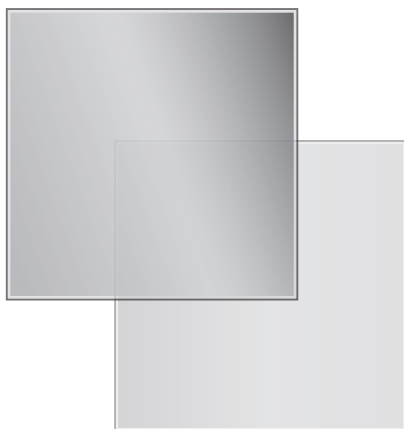
COMPONENTS
SIZE 1 (815 X 380 X 20)
SIZE 2 (910 X 380 X 20)
SIZE 3 (295 X 370 X 20)
SIZE 4 (370 X 370 X 20)
SIZE 5 (450 X 370 X 20)
SIZE 6 (910 X 610 X 20)

HEARTH COMPONENTS
42 X 15 (1X SIZE 5 + 2X SIZE 3)
48 X 15 (1X SIZE 5 + 2X SIZE 4)
51 X 15 (1X SIZE 4 + 2X SIZE 5)
54 X 15 (3X SIZE 5)

Dimensions +/- 3mm



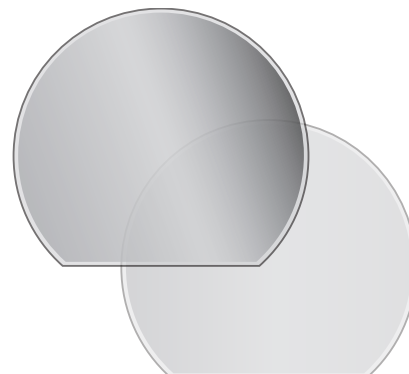
GLASS HEARTHS



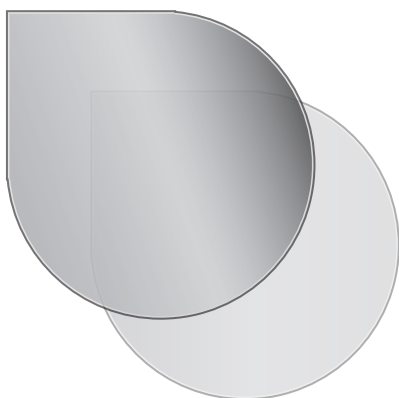
SQUARE
900mm x 900mm



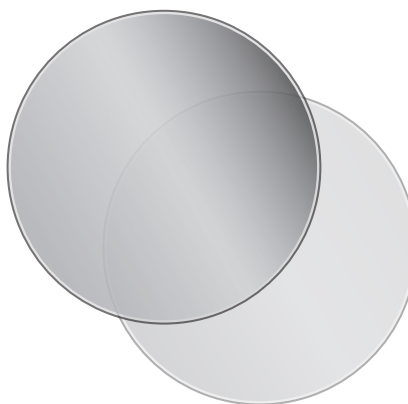
SEMI CIRCLE
1100mm x 850mm



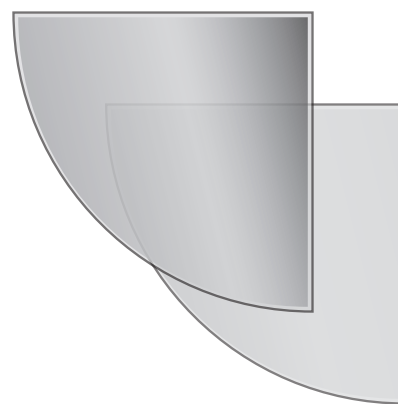
TRUNCATED
1100mm x 950mm



TEAR DROP
1100mm x 1100mm



CIRCULAR
1100mm



$\frac{1}{4}$ CIRCLE
1200mm

LIGHT DUTY STOVE GLASS HEARTHS

Our high quality, light duty 12mm thick tempered glass hearths are a contemporary alternative to complement our stove range, available in six shapes with an option of Smoked or Transparent finishes.

GRANITE & SLATE

GRANITE BOXED AND LIPPED HEARTH	OVERALL NOMINAL HEIGHT (mm)	
		POLISHED OR HONED
36" x 15"	50	✓
48" x 15"	50	✓
51" x 15"	50	✓
54" x 15"	50	✓
54" x 18"	50	(POLISHED ONLY)
56" x 15"	50	✓
59" x 15"	50	✓
60" x 18"	50	(POLISHED ONLY)

GRANITE BACK PANEL AND HEARTH SETS POLISHED OR HONED	PACKAGE
48" OR 54" X 15" BOXED AND LIPPED HEARTH WITH 37"X37" B/P WITH STANDARD CUT OUT	✓

GRANITE FLAT HEARTH	OVERALL NOMINAL HEIGHT (mm)	POLISHED OR HONED
PUSH-UNDER BACK HEARTH (30" x 6")	20	✓
STANDARD BACK HEARTH (32" x 15")	20	✓
LARGE BACK HEARTH (38" x 15")	20	✓
36" x 18" <small>NEW</small>	20	✓
36" x 24" FOR FREESTANDING STOVES (FINISHED ALL FOUR SIDES)	20	✓
48" x 15" <small>NEW</small>	20	(HONED ONLY)
48" x 18"	20	✓
54" x 15" <small>NEW</small>	20	(HONED ONLY)
54" x 18"	20	✓
60" x 20"	20	✓

GRANITE SLIPS STANDARD SIZES	POLISHED OR HONED
SIZE ONE (BASKET) OPENING 635 x 635 (1 x (940 x 305) 2 x (152 x 635))	✓
SIZE TWO (INSET) OPENING 420 x 570 (1 x (940 x 370) & 2 x (260 x 570))	✓
SIZE THREE (STOVE) OPENING 661 X 840 (1 X (965 X 180) & 2 X (152 X 839))	✓

BACK PANELS	OVERALL NOMINAL THICKNESS (mm)	POLISHED OR HONED	SLATE HONED*
37" x 37" WITH STANDARD CUT OUT	20	✓	✓
37" x 37" WITH NO CUT OUT	20	✓	✓
40" x 40" WITH STANDARD CUT OUT	20	(POLISHED ONLY)	✓
40" x 40" WITH NO CUT OUT	20	(POLISHED ONLY)	✓

SLABBED HEARTH FOR SOLID FUEL	OVERALL NOMINAL HEIGHT (mm)	POLISHED OR HONED
36" x 18"	50	(POLISHED ONLY)
48" x 15"	50	✓
48" x 18"	50	✓
54" x 15"	50	✓
54" x 18"	50	✓
56" x 18"	50	(POLISHED ONLY)
60" x 18"	50	(POLISHED ONLY)

* Non stock items,
ten working day
lead time.

Other sized Slabbed Hearths are available, prices on request. Push unders are also available, prices on request.

SLATE BOXED & LIPPED HEARTH	OVERALL NOMINAL HEIGHT (mm)	HONED
36" x 15"	50	✓
48" x 15"	50	✓
54" x 15"	50	✓
59" x 15"	50	✓

DESIGN LINE SLIPS TO FIT A CAPITAL FIREPLACE
POLISHED OR HONED GRANITE
AEGEAN LIMESTONE & CORINTHIAN STONE
MICROMARBLE SUITE
PORTUGUESE LIMESTONE (EXTENDED DELIVERY MAY APPLY)

AEGEAN LIMESTONE (STOCK)	OVERALL NOMINAL HEIGHT (mm)	SIZE
STANDARD BACK HEARTH	20	813 X 380 X 20 (32 X 15)
LARGE BACK HEARTH	20	964 X 380 X 20 (38 X 15)
HEARTH 48" X 15" BOXED AND LIPPED	50	
HEARTH 54" X 15" BOXED AND LIPPED	50	
HEARTH 59" X 15" BOXED AND LIPPED	50	
SLIP SET STANDARD SIZE TWO		OPENING 420 X 575 (1 X (945 X 365) & 2 X (260 X 575))
REBATE SPACER STRIPS (STOCK)		
AEGEAN LIMESTONE		3 PART (1 X (965 X 50 X 20) 2 X (915 X 50 X 20)
CARRARA MARBLE		3 PART (1 X (965 X 50 X 20) 2 X (915 X 50 X 20)
LIBERTY WHITE		3 PART (1 X (965 X 50 X 20) 2 X (915 X 50 X 20)
FLATS (STOCK)		
PORTUGUESE LIMESTONE, AEGEAN LIMESTONE & CORINTHIAN STONE		48 X 20 X 20
		60 X 20 X 20

BESPOKE CUTTING & FABRICATING SERVICE AVAILABLE ON REQUEST,
PLEASE CONTACT YOUR LOCAL CAPITAL STOCKIST FOR PRICES.



New improved, Scratch Resistant

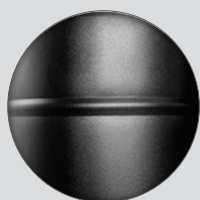
Twin Wall System



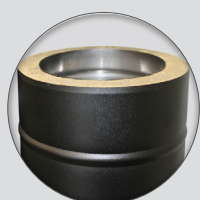
20
YEARS
MANUFACTURER
GUARANTEE
316 LINER



**ENHANCED
SCRATCH RESISTANCE**

















**TEXTURED
MATT BLACK FINISH**



**INSULATED
FLUE SYSTEM**

AVAILABLE IN STAINLESS STEEL AND BLACK

DESCRIPTION	
Lengths	
1000mm Length	
500mm Length	
250mm Length	
150mm Length	
Adjustable Length 400mm - 560mm	
Adjustable Length 560mm - 920mm	
Bends	
15 Degree Bend	
30 Degree Bend	
45 Degree Bend	
Adaptors	
Adaptor to Single Wall	
Flex to Twin Wall Adaptor	
Twin Wall to Flex Adaptor	
Increasing Single to Twin Wall Adaptor	
Cowls	
All Weather Cowl	
All Weather Cowl - Gas	
Rain cap	
Flashing 25 - 45 Degree	
Storm Collar	

DESCRIPTION	
Fire Stops / Trim Rings	
Fire Stop Spacer	
Split Fire Stop Spacer 31 - 45 D	
Vented Fire Stop Spacer	
45 Deg Trim Collar - Oval	
90 Deg Trim Collar 90mm W	
Supports	
Adjustable Base Support 60mm - 5	
Roof Support	
Base Support Bracket	
Ceiling Support	
Vented Ceiling Support	
Roof Stabilizer Bracket - 1mtr to	
Tees	
45 Degree Tee	
90 Degree Tee	
Tee Cap	
Wall Bands	
Wall Band Adjustable 50mm-75mm	
Wall Band Adjustable 50mm-150mm	
Wall Band Adjustable 150mm-250mm	
Wall Band Adjustable 250mm-350mm	
Adjustable Wall Sleeve 45 Deg -	
Guy Wire Bracket	



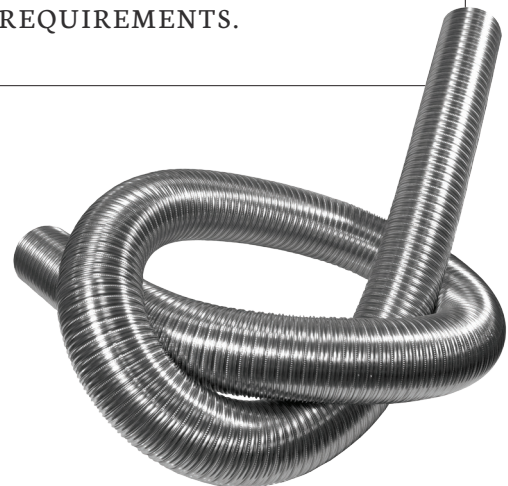
**UP TO 35 YEAR
WARRANTY**



Our liners have been tested by BSRIA and are HETAS approved. Smooth inner skin provides resistance to corrosive attack due to easydrain down of condensate, less opportunity for soot collection and smooth surface for ease of sweeping. The Flue Liner is constructed from a single strip of steel which is bent at 180 degrees and then the seam is folded in four planes to give a quattrolock seal.

TWINFLEX offers the most flexible liner on the market enabling trouble free installation into the most challenging of chimneys.

PLEASE CONSULT WITH YOUR LOCAL CAPITAL RETAILER ABOUT OUR FLUE LINER, OUR RETAILERS ARE ABLE TO GIVE YOU ADVICE ON ALL ASPECTS OF YOUR FIREPLACE REQUIREMENTS.



VITREOUS ENAMEL PIPE

1 METRE LENGTH
(STOVE FLUE PIPE - 5" OR 6")



**1 METRE LENGTH
WITH DOOR**
(STOVE FLUE PIPE - 5" OR 6")



0.5 METRE LENGTH
(STOVE FLUE PIPE - 5" OR 6")



**0.5 METRE LENGTH
WITH DOOR**
(STOVE FLUE PIPE - 5" OR 6")



0.25 METRE LENGTH
(STOVE FLUE PIPE - 5" OR 6")



90° BEND
(STOVE FLUE PIPE - 5" OR 6")



90° BEND WITH DOOR
(STOVE FLUE PIPE - 5" OR 6")



45° BEND
(STOVE FLUE PIPE - 5" OR 6")



45° BEND WITH DOOR
(STOVE FLUE PIPE - 5" OR 6")



T PIECE
(STOVE FLUE PIPE - 5" OR 6")



T PIECE PLUG
(STOVE FLUE PIPE - 5" OR 6")



**0.25 METRE LENGTH
WITH DAMPER**
(STOVE FLUE PIPE - 5" OR 6")



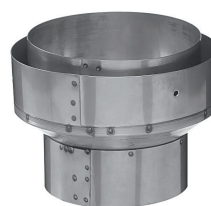
M TO M FITTING
(STOVE FLUE PIPE - 5" OR 6")



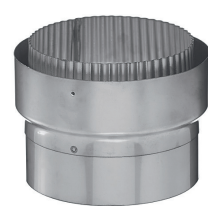
PIPE BRACKET
(STOVE FLUE PIPE - 5" OR 6")



INCREASING ADAPTOR
(VITREOUS TO FLEXI - 5" OR 6")



FLUE ADAPTOR
(5" VITREOUS TO FLEXI)
(6" VITREOUS TO FLEXI)



CHAMBER BALLOON

Chimney balloon and inflation tube, available in Small (15" x 19"), Medium (24" x 12") and Large (36" x 15")



DATA PLATE

Document J Data Plates must be completed and permanently displayed in the room where stove products have been installed

CAPITAL FIREPLACES www.capitalfireplaces.co.uk	
IMPORTANT SAFETY NOTICE This label must not be removed or covered	
Property Address	
Flue / Hearth located in	
Chimney is suitable for	
Chimney designation	
Flue size	
Installation Date	
Installed By	
Suitable for condensing appliances Yes/No	
Appliance Designation	
Other information	
The heating appliance and chimney should be checked annually by a competent person if burning solid fuel it is essential the flue is swept regularly.	



FIXING KIT

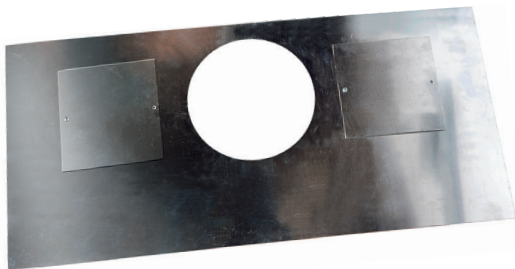
Register plate (any standard size), brackets, collar, 1 metre of stove pipe (5" or 6" no door) & CO detector



MICAFIL VERMICULITE - 100 LITRE

FIXING REGISTER PLATE KITS

Register Plate with two access hatches available in the following sizes; 1220mm x 405mm, 1075 x 380mm and 810mm x 380mm



REGISTER PLATE COLLAR

Available in 5" and 6"



CHIMNEY POTS & COWLS

CANNON HEAD POT (ROLL TOP POT)

AVAILABLE IN 300, 450 & 600MM
HEIGHTS. 200MM INTERNAL TOP DIAMETER



CANNON HEAD POT (BUFF) (ROLL TOP POT)

300MM HEIGHT, 200MM INTERNAL
TOP DIAMETER



FLUE VENTILATOR (PEPPER POT)

190MM SPIGOT



GAS FLUE TERMINAL (190MM SPIGOT)

ONLY FOR USE WITH GAS FIRES REQUIRING
AN OUTLET OF UP TO 125MM DIAMETER



JACKDAW DETERRENT

FITS BOTH ROUND & SQUARE POTS
UP TO 250MM



ANTI-DOWN DRAUGHT (ALL PURPOSE CHIMNEY COWL)



COLT 2 STATIC (ANTI-DOWN DRAUGHT COWL)

SUITABLE FOR GAS & SOLID FUEL FIRES,
FITS 125 - 250MM POTS



RAIN TOP COWL

SUITABLE FOR SOLID FUEL FIRES ONLY
FITS 150 - 200MM POTS



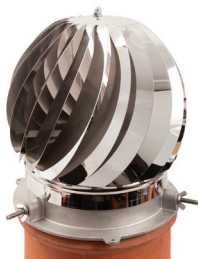
COLT HIGH TOP COWL (BIRD & ANIMAL)

SUITABLE FOR SOLID FUEL FIRES ONLY
FITS 125 - 250MM POTS



ROTOVENT TURBOLITE

SUITABLE FOR GAS & SOLID FUEL FIRES

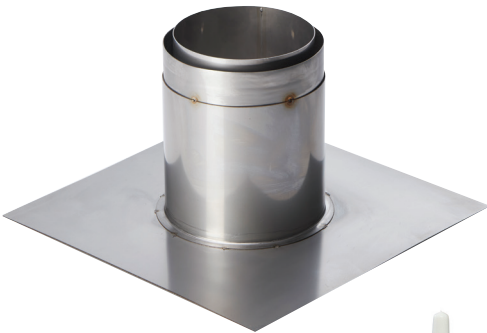


POT HANGER SOLID FUEL (SOLID FUEL CHIMNEY LINER COWL)



CONNECTS
TO FLEXIBLE
LINER
5" OR 6"

TOP HAT ADAPTOR



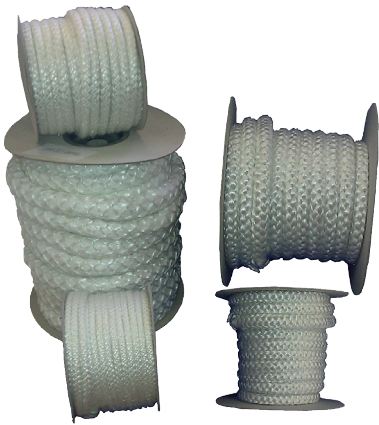
ROPE KIT

5 metres high temperature rope seal and
30ml rope adhesive available in 6mm,
8mm, 9mm, 10mm and 12mm



ROPE ROLLS

25 metre rope rolls available in the following sizes;
6mm, 8mm, 9mm, 10mm and 12mm



ROPE ADHESIVE - 50ML



FIRE BLOCK SEAL - 310ML

1500 °C buff sealing and repairing firebricks, fireplaces and ovens



FIRE CEMENT - 300ML

1400 °C black, ideal for patching and repairs of firebricks and brickwork



FLUE SEAL - 300ML

1000 °C black sealant for jointing and adhesive on fires,
stoves and chimney sections



SILICON FIREPROOF SEALANT - 310ML

1200 °C clear silicon sealant, ideal for the fixing of glass hearths

STOVE ACCESSORIES

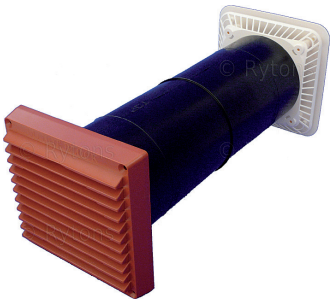
AC3LP AIR VENT

(31.68cm² Equivalent Area) Retro-fitted Terracotta combustion air vent



AC10LP AIR VENT

(104cm² Equivalent Area) Retro-fitted Terracotta combustion air vent



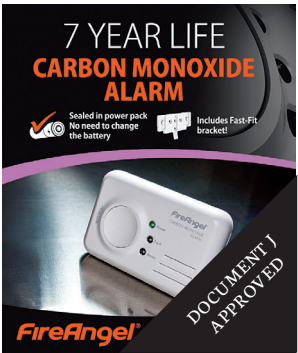
RYTON FLOOR VENTS

Ryton floor vent in Brass and Stainless Steel
Free area: 110cm² per set



CO DETECTOR

Fire Angel 7 year life carbon monoxide alarm



STOVE THERMOMETER



STOVE FAN



LOG MOISTURE METER



SMOKE PELLETS

Pack of 100



MATCHES



STOVE GLASS AVAILABLE IN VARIOUS SIZES

FLUE FREE 750g
FLUE & CHIMNEY CLEANER



GLASS CLEANER 320ML
STOVE GLASS CLEANER



BLACK HIGH-TEMP PAINT
SOLD IN A PACK OF 6



CHARCOAL HIGH-TEMP PAINT
FOR CONTEMPORARY STEEL STOVES



GRAPHITE HIGH-TEMP PAINT
FOR CAST IRON TRADITIONAL STOVES



ALMOND HIGH-TEMP PAINT
FOR STOVES



STONE SEALER 1 LITRE
FOR NATURAL STONE



STOVE & GRATE POLISH
BLACK - 75G TUBE



ATMOSFIRE STOVE
GLASS DRY WIPE PAD



REPLACEMENTS

G2 GRATE

FOR USE WITH AP14 ASHPAN
12½" (W), FOR 14" BACK



G3 GRATE

FOR USE WITH AP9 ASHPAN
14½" (W), FOR 16" BACK



G4 GRATE

FOR USE WITH AP9 ASHPAN
16" (W), FOR 18" BACK



G5 GRATE*

FOR USE WITH AP9 ASHPAN
15" (W), FOR 16" BACK



G6 GRATE*

FOR USE WITH AP9 ASHPAN
15" (W), FOR 18" BACK



G7 GRATE

FOR USE WITH AP9 ASHPAN
15" (W), FOR 16" BACK



G12 GRATE*

15" (W), FOR 16" BACK



G14 GRATE

FOR USE WITH AP14 ASHPAN
12½" (W), FOR 14" BACK



G15 GRATE*

FOR USE WITH AP9 ASHPAN
15" (W), FOR 16" BACK



G16 GRATE*

FOR USE WITH AP9 ASHPAN
17" (W), FOR 18" BACK



G38 GRATE

FOR USE WITH AP38 ASHPAN
17" (W), FOR 16" BACK



BRICK SET
FOR GALLERY & CAPITAL STOVES



CB2
CAST IRON BACK



CB4
CAST IRON BACK



CB8
CAST IRON BACK



CB38
CAST IRON BACK



D2 DAMPER
FITS 16" BACK FOR GAS & SOLID FUEL



D17 GAS DAMPER
FITS GALLERY TRADITION



D19 & D39 DAMPER
FITS 14" BACK FOR GAS & SOLID FUEL



D38 DAMPER
FITS 16" BACK FOR GAS & SOLID FUEL



D4 SQUAREBACK DAMPER
FITS 14" FOR GAS & SOLID FUEL



CLOSURE PLATE
FITS 16" CLAY OR CAST BACK



ALL NIGHT BURNER - BLACK

16" WITH BRASS AND CHROME FINIALS



AP2 ASHPAN

FOR 16" ARCH 16½"(W) X 7"(D)



AP4 ASHPAN

FOR 14" COMBINATION 13"(W) X 6"(D)



AP9 ASHPAN

TAPERED FOR 16" BACK - 11"(W) X 8½"(D)
(FOR USE WITH G3, G4, G5, G6, G7, G15, G16)



AP11 ASHPAN

TAPERED - 12½"(W) X 7½"(D)



AP14 ASHPAN

SMALL SQUARE - 8"(W) X 7"(D)
(FOR USE WITH G2, G14)



AP18 ASHPAN

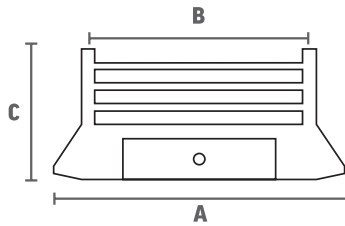
TAPERED FOR 18" BACK - 14½"(W) X 8½"(D)



A2 ASHPAN COVER

18½"(W) X 5½"(H)





DIMENSIONS

- A Maximum Width
- B Width between centre of uprights
- C Height

B1 FREE STANDING BAR

A:18" B:16½" C:11½"



B3 FREE STANDING BAR

A:21" B:17½" C:10½"



B5F FREE STANDING BAR

A:19½" B:16½" C:10½"



B9F FREE STANDING BAR

A:22" B:17½" C:12"



B12 HOOK ON BAR

A:21" B:19½" C:13"



B13 BOLT ON BAR

A:15½" B:14" C:5"



B14 BOLT ON BAR

A:19" B:17" C:5"



B15 FREE STANDING BAR

A:16" B:14½" C:10½"



B16 FREE STANDING BAR

A:13½" B:12½" C:10½"



B23 FREE STANDING BAR

A:14" B:13" C:10"



B24 FREE STANDING BAR

A:18½" B:15½" C:10"



B26 FREE STANDING BAR

A:20½" B:18" C:11"



B29 HOOK ON BAR

A:17½" B:16½" C:10"



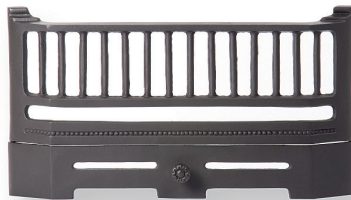
B30 HOOK ON BAR

A:18" B:17" C:10"



B31 HOOK ON BAR

A:19" B:17" C:10½"



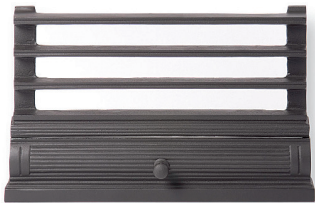
B40 HOOK ON BAR

A:20" B:17" C:12"



B48 HOOK ON BAR

A:16" B:14½" C:10"



CLAY BRICK LINTEL

FOR 16" OR 18"



CLAY BRICK 16"



CLAY BRICK 18"



SOLID FUEL KIT
ATLANTA BLACK 16"



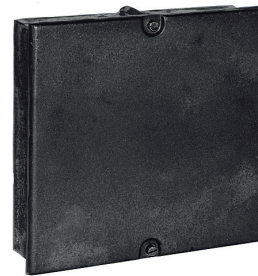
SOLID FUEL KIT
ATLANTA NICKEL 16"



SOLID FUEL KIT
BEACON BLACK 16"



SOOT BOX
9"(W) X 9"(H)



SOLID FUEL TRIM - BRUSHED, BLACK & POLISHED
16" x 22" x 2"



LOG BASKETS & STORES

MEDWAY

390 (H) 560 (L) 440 (W)



DERWENT

370 (H) 550 (L) 440 (W)



AVON

300 (H) 470 (L) 470 (W)



EDEN

190 (H) 550 (L) 410 (W)



VENETO MAXI

BLACK LEATHER EFFECT 470 (H) x 500 (W)



VENETO MAXI

BROWN LEATHER EFFECT 470 (H) x 500 (W)



NORDIC - BLACK
590 (H)



LIDO SMALL - BLACK
600 (H) x 300 (W)



LIDO LARGE - BLACK
1250 (H) x 300 (W)



LOGS, KINDLING & MATCHES HOLDERS
BLACK STEEL



FIRESIDE BUCKETS

HENLEY - BLACK/PEWTER 410 (H)



DORSET - BLACK 540 (H)



WATERLOO - BLACK 300 (H)



SALISBURY - BLACK 220 (H)



ASH BUCKET
CREAM 340 (H)



ASH BUCKET
GREY 340 (H)



KINDLING BUCKET
CREAM 340 (H)



KINDLING BUCKET
GREY 340 (H)



KINDLING BUCKET (SMALL)
CREAM 280 (H)



KINDLING BUCKET (SMALL)
GREY 280 (H)



COMPANION SETS



STOVE GLOVES



BARLETTA BLACK OR SATIN STEEL

230 (L) x 100 (W)



ELIPSE BLACK 540 (H)



ELIPSE PEWTER 540 (H)



MANOR BLACK 558 (H)



MANOR BLACK/PEWTER
540 (H)



ORION LOOP - BLACK
600 (H)



ORION LOOP - PEWTER
600 (H)



TEE SET BLACK 540 (H)



TEMPLE BLACK 584 (H)



TRIO BLACK 450 (H)



FIREGUARDS

4 FOLD SCREEN - BLACK

610 (H) x 960 (W)



BOW - BLACK

750 (H) x 640 (W)



CAMBER - BLACK CURVED GUARD

Small: 610 (H) x 660 (W) Large: 660 (H) x 760 (W)



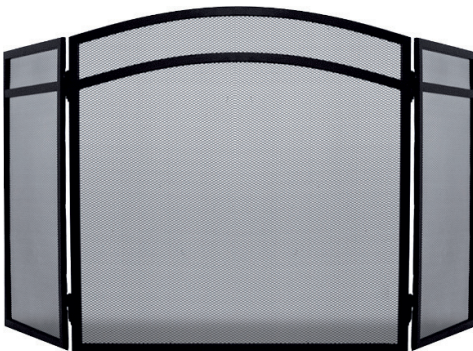
COTSWOLD - BLACK SPARK GUARD

710 (H) x 620 (W)



CLASSIC 3 PANEL - BLACK

610 (H) x 960 (W)



PREMIUM DOME - BLACK LARGE

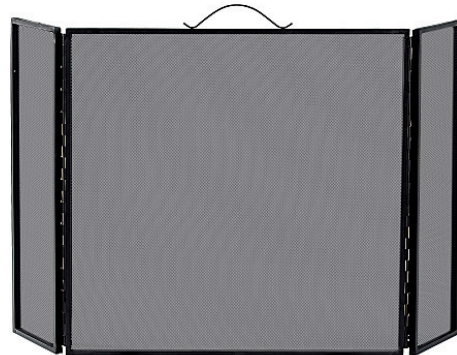
710 (H) x 610 (W)



PREMIUM DOME - BLACK SMALL
610 (H) x 510 (W)



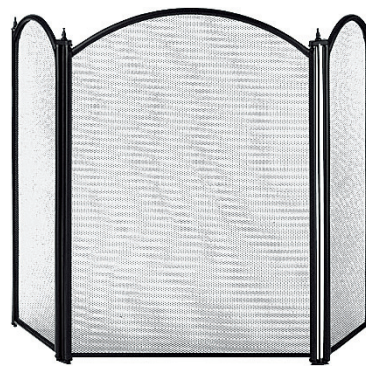
CRUSADE - 3 FOLD BLACK GUARD
584 (H) x 533 (W) x 152 RETURN



CLASSIC RECTANGULAR - BLACK
610 (H) x 540 (W)



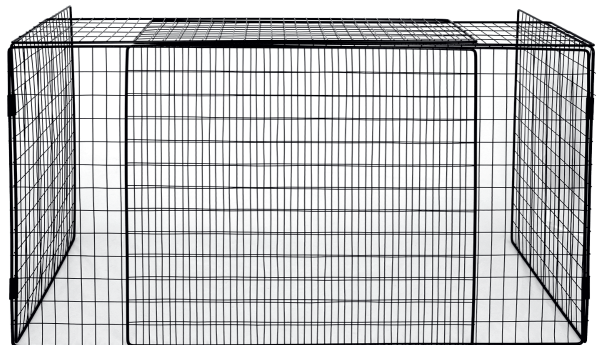
DYNASTY - 3 PANEL BLACK SCREEN
660 (H) x 431 (W)



PREMIUM RECTANGULAR - BLACK
710 (H) x 610 (W)



NURSERY GUARD - BLACK
670 (H) x 870-1600 (W)



ELECTRIC STOVES

Our Electric Stoves feature an adjustable flame and thermostat and includes an automatic cut-out safety device. (Output: 900-1800w Fan Heater)



VISTA

540 (H) X 415 (W) 280 (D) MM



ORBIT

540 (H) X 415 (W) 280 (D) MM



ZODIAC

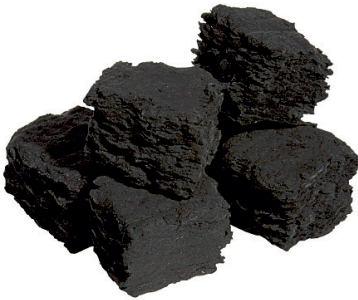
570 (H) X 510 (W) 280 (D) MM



GAS & ELECTRIC ACCESSORIES

GAS COALS (BOX OF 50)

SMALL, MEDIUM & LARGE



GAS DRIFTWOOD

BOX OF 16



GAS LOGS

SMALL 6" (BOX OF 8) MEDIUM 8" (BOX OF 8)

LARGE 12" (BOX OF 4)



GAS FIREWOOD

BOX OF 16



GAS HIGH DEFINITION LOGS

FIREBASKETS & SUNKEN BURNER

(18 PIECES)



GAS EMBAGLOW

FLICKERING EMBERS



GAS PEBBLES

MIXED SIZES (BOX OF 30)



GAS HOT BOX

16" MAGNETIC HOT BOX RIBBED



ELECTRIC PD2 FIRE



ANTIQUE BRASS TRIM
MAGNETIC TRIM FOR GAS & ELECTRIC



BLACK TRIM
MAGNETIC TRIM FOR GAS & ELECTRIC



BRUSHED STEEL TRIM
MAGNETIC TRIM FOR GAS & ELECTRIC



POLISHED TRIM
MAGNETIC TRIM FOR GAS & ELECTRIC



ANTIQUE BRASS FRET
16" BAUHAUS FRET FOR GAS & ELECTRIC



BLACK FRET
16" BAUHAUS FRET FOR GAS & ELECTRIC



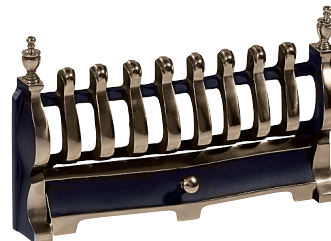
CHROME FRET
16" BAUHAUS FRET FOR GAS & ELECTRIC



POLISHED FRET
16" BAUHAUS FRET FOR GAS & ELECTRIC



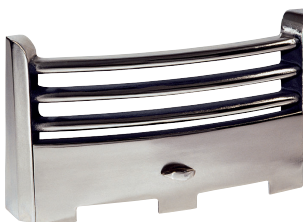
BLENHEIM FRET
16" ANTIQUE WITH URN FINIALS
FRET FOR GAS & ELECTRIC



BLACK BALTIMORE FRET
16" FRET FOR GAS & ELECTRIC



POLISHED BALTIMORE FRET
16" FRET FOR GAS & ELECTRIC



Recent changes in legislation have been made in an attempt to reduce the emissions of all solid fuel burning appliances. As such solid fuel Baskets/Kits, Combination Fireplaces and Cast Iron Inserts should not be used as local space heaters in order to reach and maintain a certain level of human thermal comfort. Whilst the actual heat output of these products has not changed from previous years they should now be viewed as for decorative use only.

Due to the nature of the materials and appliances used within this brochure, actual finishes and colours may vary slightly. Flames shown within the fires may also vary depending on gas type, fuel quality and the performance of the flue or chimney. For information on aftercare and maintenance, please visit our website at www.capitalfireplaces.co.uk

Capital Fireplaces Ltd reserve the right to change specification or de-list products at any time. Please note images shown in this brochure are for illustration purposes only.

FIND YOUR LOCAL RETAILER

All of our products shown in this brochure are available to purchase from your local Capital retailer, they are able to give you advice on all aspects of your fireplace requirements. Simply visit our website to locate your nearest retailer at www.capitalfireplaces.co.uk



CAPITAL

— ACCESSORIES —

www.capitalfireplaces.co.uk